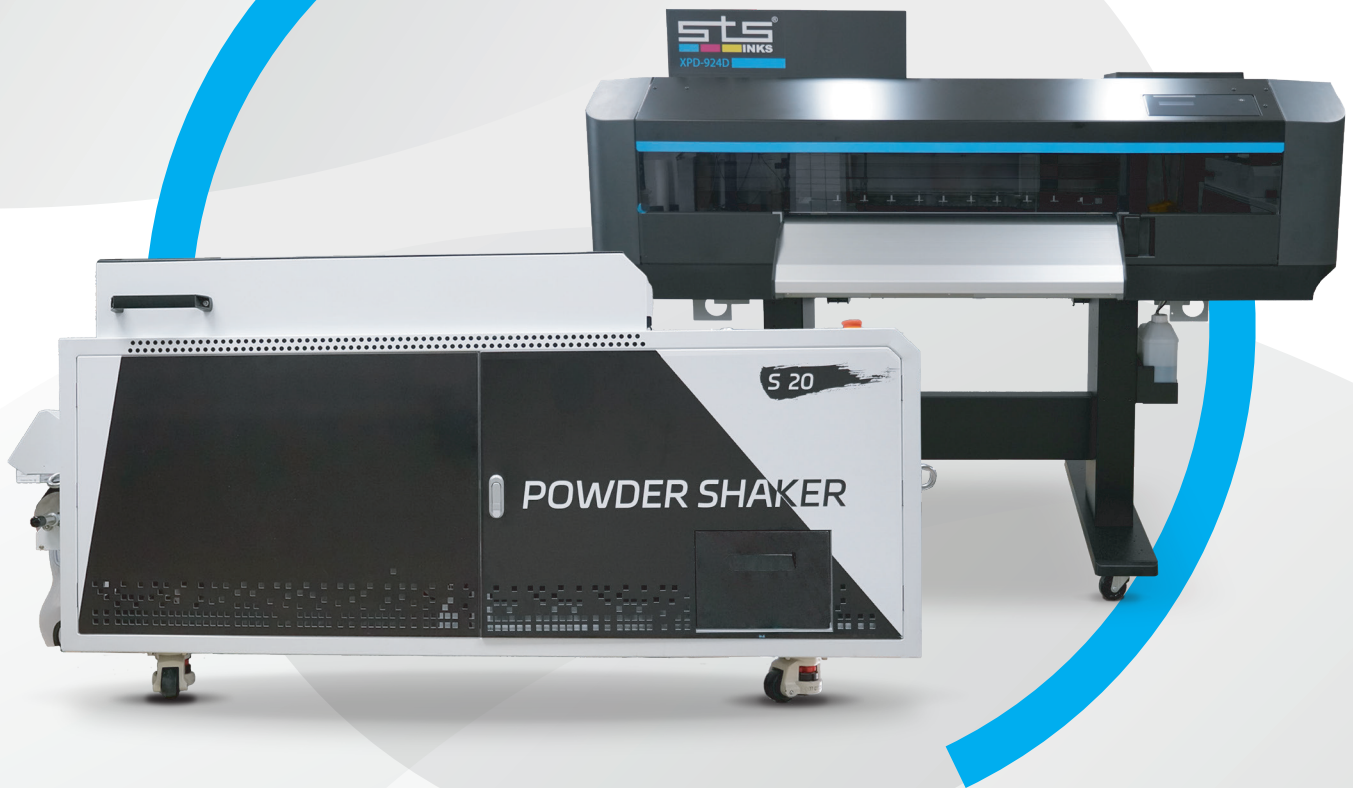


sts[®]

INKS

Color is in Our DNA



STS DIRECT TO FILM SYSTEM

BUILT FOR PROFESSIONALS BY PROFESSIONALS

WWW.STSINKS.COM



XPD-924D

MAX SPEED
sqm/hr 17.5
sqf/hr 188

The STS Inks XPD-924D 24-inch DTF Printer boasts staggered dual AccuFine HD printheads for enhanced productivity, delivering high-quality transfers with smooth gradations and fine lines. As the fastest dual-head printer on the market, it maintains true quality and consistency in every print. Our new XPD-924 features a built-in white ink circulation system that operates continuously, ensuring a seamless flow of ink.

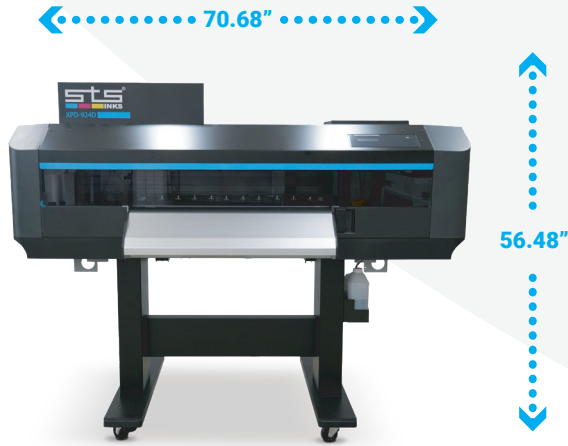
This advanced feature reduces the likelihood and the need for maintenance, resulting in increased uptime and greater profitability for our customers!

The XPD-924D is packed with standard features such as:

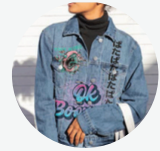
- Dropmaster 2 (Automatic Bi-Directional Alignments)
- Feed Master (Automatic Feed Roller Adjustment)
- i-screen Print Effects- Multiple Waveforms that Mitigate Banding
- Media Tracker (Roll Remainder Tracking)
- White Ink Circulation
- Auto Cleaning and Maintenance
- AATCC61-2A [AATCC 61 Method 2A]

The XPD-924D comes bundled with Digital Factory RIP 11 Software or inedit neoStampa RIP Software, offering the perfect balance of speed and quality. Pre-installed high quality color profiles at various resolutions to match our ink and film make this printer instantly ready for production.





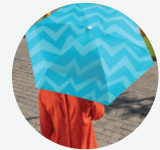
Cotton and Polyester



Demin



Fleece



Nylon

FEATURES

- High-precision Heavy-duty Aluminum Rail System for High Quality and Stable Printing.
- Ease-of-use Side Mounted LAN and Power Plugs and LED Operation Panel.
- New AccuFine HD Printheads Provide Faster Speeds with Exceptional Quality.
- Built-in Sensors for Operator-Driven Automatic Bi-directional and Page feed Alignments.
- Improved Front Dryer System for 20% Faster Ink Dry Times.
- Updated Media Angles and Media Feeding

Mechanism to Allow for Easy Loading and Page Feed for DTF Film.

- Internal LED Lighting for Unobstructed Print.
- Viewing and Maintenance Access.
- Includes the Mutoh Status Monitor (MSM) Companion Software for Convenience and Efficiency: Records Print History, Job Cost Analysis, Remote Access.
- Complete Turnkey Solutions that Produce Exceptional Transfers that are Super Soft and Colorful with Excellent Elasticity, and Washability which Creates the Industry's Finest Hand Feel Transfers.

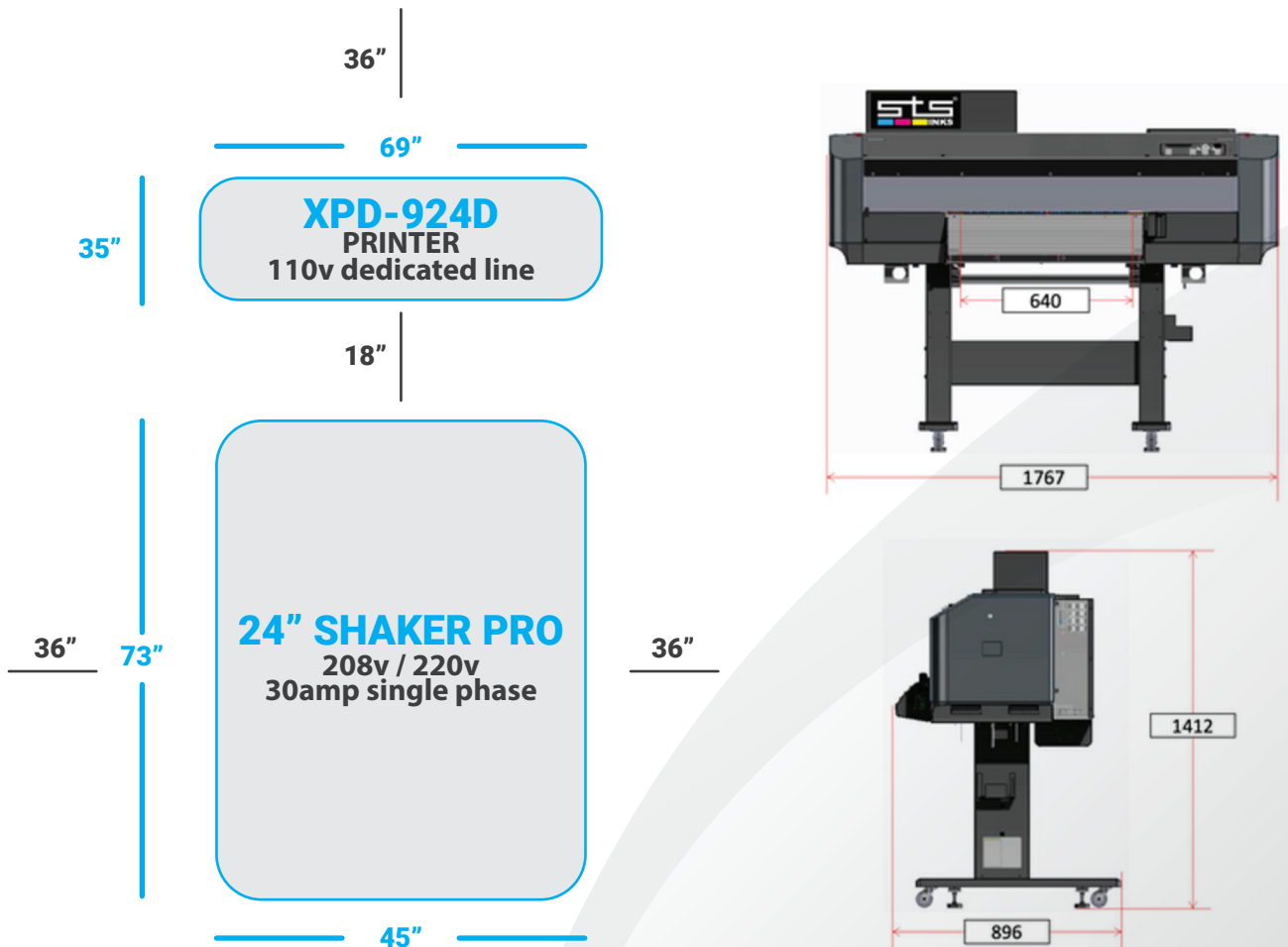
SPECIFICATIONS

PRINTING METHOD	Drop-on-demand Micro Piezo Inkjet Technology	INTERFACE	Gigabit-Ethernet (1000BASE-T)	
PRINT HEAD HEIGHT	Four-level adjustment: 1.5mm, 2.0mm, 2.5mm, 4.0mm	POWER REQUIREMENTS	AC 100-220V ± 10%, 50/60Hz ± 1 Hz	
PRINT HEAD	2 (staggered)	PRINTING ENVIRONMENT	Temperature: 68-77°F / 20-26° C Humidity: 40-55%	
MAX PRINT RESOLUTION	1200x1200 dpi (1200/900/600/300 dpi print modes)	POWER CONSUMPTION	Main: Operation status 70W or less Standby: 30W or less	
MEDIA WIDTH	600 cm 25"	DIMENSIONS (WxDxH)	Printer including stand: 70.68"x35.23"x56.48" cover closed	
MEDIA CAPACITY	0 5.9" dia / 2" & 3" cores Roll media 66lbs or less	WEIGHT	Body: 310lb Stand: 70.54lb / Body: 140kg Stand: 32kg	
MAX MEDIA THICKNESS	Low 1 0.3mm, Low2 0.8mm, Mid. 1.3mm, High 2.8mm	INKS	TYPE	DTF
MAX PRINTABLE WIDTH	24.5 in		INK SET	4 color (CMYK) White
MAX PRINT SPEED	17.5 sqm/hr - 188 sqf/hr		VOLUME	500 ml Direct to Film Inks Cartridge XPD2
RIP SOFTWARE	CADlink™ Digital Factory 11 / Inedit™ neoStampa		Nº. OF SLOTS	6

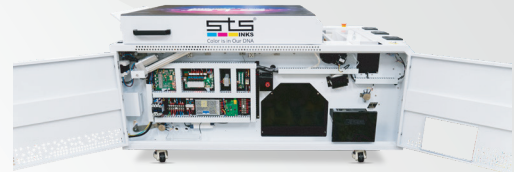
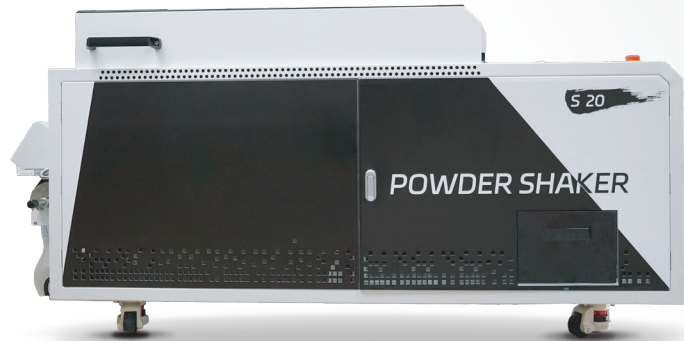
XPD-924D SPEEDS

PRINTER MODE	RESOLUTION	PASS	PRINTING SPEED [ft ² /h]	PRINTING SPEED [lm/h]	PRINTING SPEED [lft/h]	TIME FOR 328 lft ROLL [h]
HIGH SPEED	900X600	3	17.5	188	29.0	3.5
PRODUCTION	600X1200	4	13.5	145.0	22.0	4.5
ENHANCED QUALITY	900X1200	6	9.0	96.0	15.0	6.7
HIGH QUALITY	1200X1200	8	6.7	72.0	11.0	9.0

DIMENSION CENTIMETER



24" STS AUTOMATIC S-20 POWDER SHAKER



Our Automatic 24"/600mm TPU Adhesive Powder Shaker is packed with the latest technology to evenly spread and melt the exact amount of adhesive material directly onto your design saving time, effort and cost. Perfect for medium/large size customers.

FEATURES

- HMI adjustable temperature.
- Now 7" LCD Screen.
- Top & bottom Infrared drying.
- Motorized Heavy-Duty Pistons for Automatic Opening and Closing of the Shaker Hood.
- Auto and manual interface.
- Mesh/belt driven.
- Can be operated independently or together with STS DTF printer.
- Automatic TPU Powder weight distribution control.
- TPU Chamber Safety Sensor for Wandering Hands
- Tension Feed/Take-up reel.
- Vacuum conveying system. Built-in air purifier with charcoal and HEPA filter.
- Dual Auto Kill Switch Sensors to Help Prevent Overheating and Fire.

SPECIFICATIONS

MAX WIDTH	24" / 610 mm
ELECTRICAL	208/220V 50/60Hz Single-Phase 30Amp
CONSUMPTION	6kw Power
SHAKER SIZE	980mmW x 1680mmL x 1020mmH 38.5"W X 66"L X 40"H
PACKAGING SIZE	46" W x 75" L x 44"H 1300mmW x 1880mmL x 1100mmH
SHIPPING WEIGHT	370KG 815 lbs
NET WEIGHT	250KG / 552 lbs



ABOUT US

Founded in 1999, STS has established its reputation as a leader in digital printing inks manufacturing and technology. In 2005, the company took its first steps into the U.S. market with a manufacturing facility in New York. By 2009, STS had relocated and expanded its operations to Boca Raton, Florida showcasing its commitment to growth and innovation on a global scale.

As a world leader in wide format, industrial, promotional, textile, and apparel digital ink markets, STS is renowned for its application of cost-effective and cutting-edge technologies. Our commitment to innovation extends to streamlining processes and procedures, transforming ideas into reality.

STS products are distributed in over 160 countries across North America, Europe, South America, the Middle East, Africa, Asia, and Oceania. Our manufacturing principles are rooted in continuous improvement and efficiency.

We prioritize maintaining strong relationships with our OEM customers, ensuring a deep understanding of their requirements and providing comprehensive customer support from concept through the product lifecycle.

Our manufacturing assets, including three fully equipped labs and a 50,000 sq. ft production facility in Boca Raton, Florida, enable us to support processes ranging from simple to highly complex. Additionally, our presence extends globally with offices and warehouses in Bulgaria and Colombia, facilitating fast and easy distribution to our customers.



STS INKS®
8300 CONGRESS AVE. BOCA RATON, FL. 33487
TEL: 561-999-8818 | EMAIL: SALES@STSINKS.COM
WWW.STSINKS.COM

STS®
INKS
Color is in Our DNA